

FACT SHEET

## SAFETY ZONES



### Safety Zones - A Safety/Security service in Volvo Connect

Volvo Connect is one single interface for your fleet and business where you can manage vehicles, trailers and all other assets of importance.

### Increased safety through automated speed limits

This service allows the fleet manager to set up geographical zones that automatically limit the speed of the vehicles in that zone.

The driver will receive information in the instrument cluster when entering and leaving a Safety Zone.

### Easy setup

The fleet manager defines the zones in Volvo Connect. Flexible settings allow for scheduled activation, several shapes and customized speed limits. Customized speed limits can be set between 20–100 km/h. The fleet manager can set up which zones that should be active for each vehicle.

### Easy monitoring

Fleet users in Volvo Connect will receive events when vehicles enter and leave the zones. Events will also be shown when a driver overrides or violates the zone speed limit.

All events are presented in the Volvo Connect Map and in the Tracking Report with position and timestamps including additional information such as driver name, speed etc.



### SAFETY

- Secure speed compliance in selected areas.
- Increase safety and reduce driver stress.
- Monitor Safety Zone events including speed violations.

## FACT SHEET

# SAFETY ZONES

### Increased safety

Safety Zones are suitable within areas where it is important that speed is kept low, such as: harbours, logistic centres, quarries etc.

This service is also suitable in areas where there is a higher risk of accidents such as in crowded areas of cities, around schools or at public events.

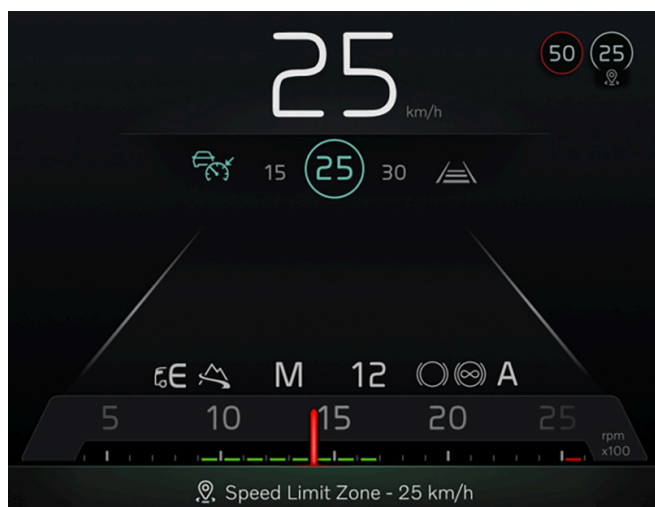
For convenience purposes, the driver will have the possibility to override the set speed limit by doing a kickdown on the accelerator pedal. This gives the opportunity to increase the speed above the set speed limit in the Safety Zone. When the driver releases the accelerator pedal, the truck will automatically brake smoothly until the set speed limit is reached again. If the driver overrides the speed limitation, an event will be sent and presented in Volvo Connect.

### Driver interface

When entering a Safety Zone, the driver will be notified in the instrument cluster. Information about entering, which speed is set in the area, and when leaving the zone.

While in a Safety Zone, an icon with the speed limit of the zone is shown in the instrument cluster.

If the truck is entering a Safety Zone with a higher than allowed speed, the truck will automatically brake to meet the set speed limit. This applies even when the cruise control is engaged. The cruise control speed will change to the set speed limit of the zone.

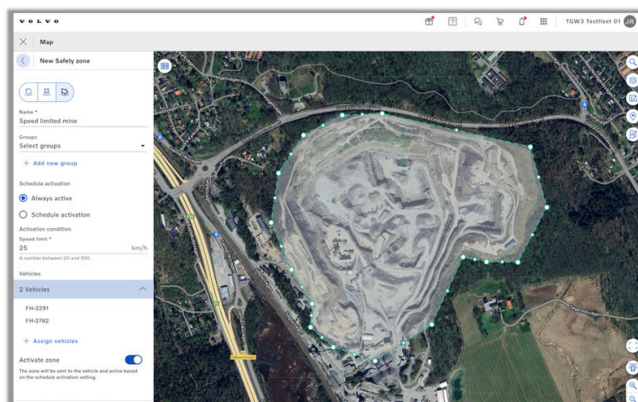


Example of information in the dashboard.

### Sales variants

- SE1-SZM** Safety Zones, monthly subscription
- SE1-SZ6M** Safety Zones, six months prepaid subscription
- SE1-SZ1** Safety Zones, one year prepaid subscription
- SE1-SZ2** Safety Zones, two years prepaid subscription
- SE1-SZ3** Safety Zones, three years prepaid subscription
- SE1-SZ4** Safety Zones, four years prepaid subscription
- SE1-SZ5** Safety Zones, five years prepaid subscription
- SE1-SZ6** Safety Zones, six years prepaid subscription
- SE1-SZ7** Safety Zones, seven years prepaid subscription
- SE1-SZ8** Safety Zones, eight years prepaid subscription

**Note:** Safety Zones require an active Positioning service subscription.



Safety Zones in Volvo Connect.